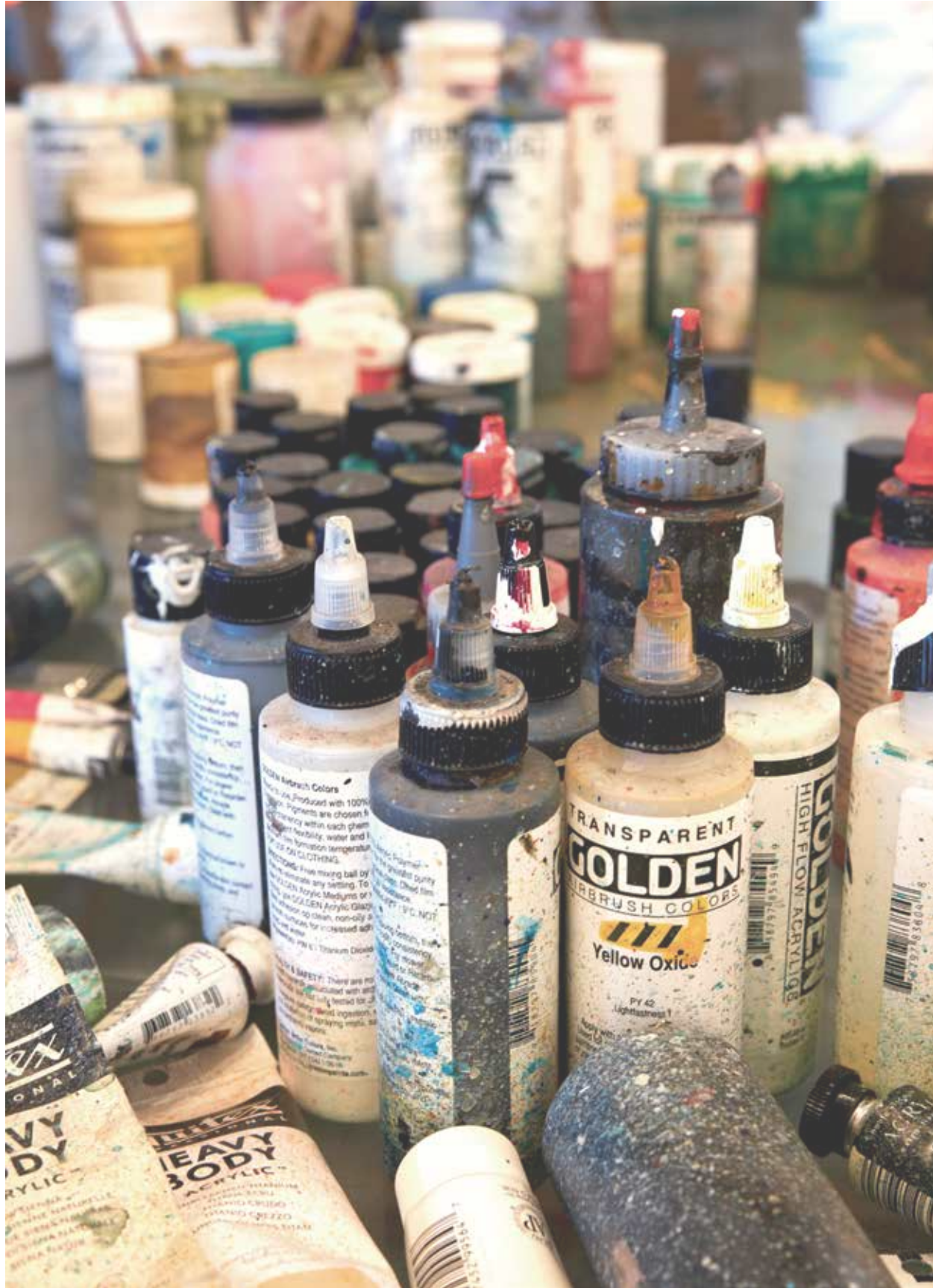




BENTLEY®

BURNISH

THE OUTSKIRTS COLLECTION



BENTLEY



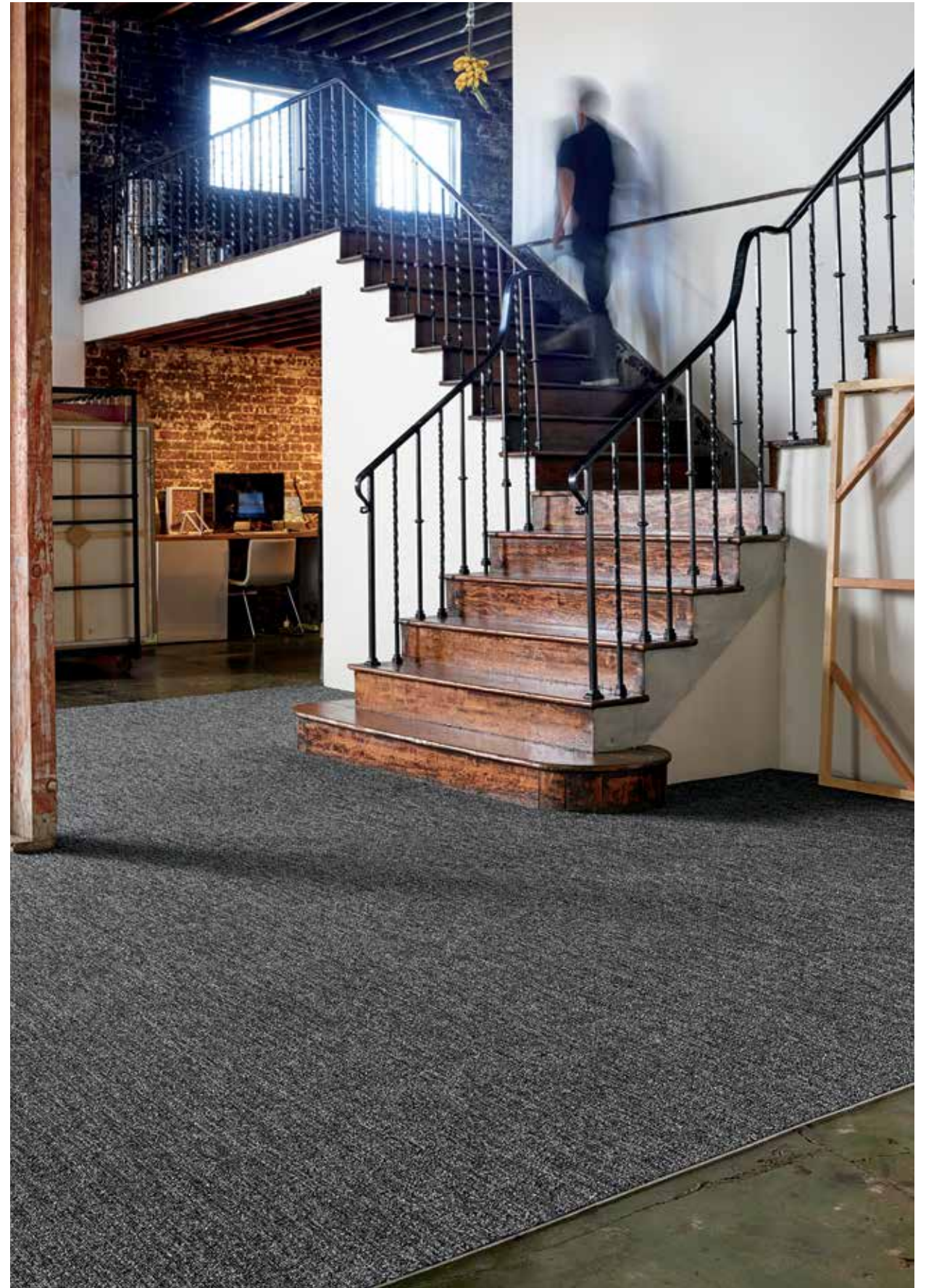
Burnish

To burnish is to bring out the very best, and that is exactly what Burnish™ brings to the Outskirts Collection. Burnish is purposefully designed to combine, connect, coordinate, and compliment the other styles in the collection, Ritual™ and Repose™. With an intricate blend of fine texture and contrasting yarns, Burnish smoothly and expertly covers the floor adding depth and a polished finish.

Available in all formats of tile, 18x36, 9x36 and 24x24, Burnish Carpet Tile can increase or minimize pattern and scale based on the installation method selected. It's also available in Broadloom and EliteFlex™ 6 ft Cushion to simply apply an uninterrupted surface to any interior space. And with 12 strong neutral shades, Burnish adapts to all the other materials in the space to elevate the entire palette.



BURNISH 4BRT8, MODJESKA CANYON 402920, ANGELES CREST 402915, 9 IN X 36 IN ASHLAR



BURNISH 4BRT8, MODJESKA CANYON 402920, 24 IN X 24 IN - MONOLITHIC



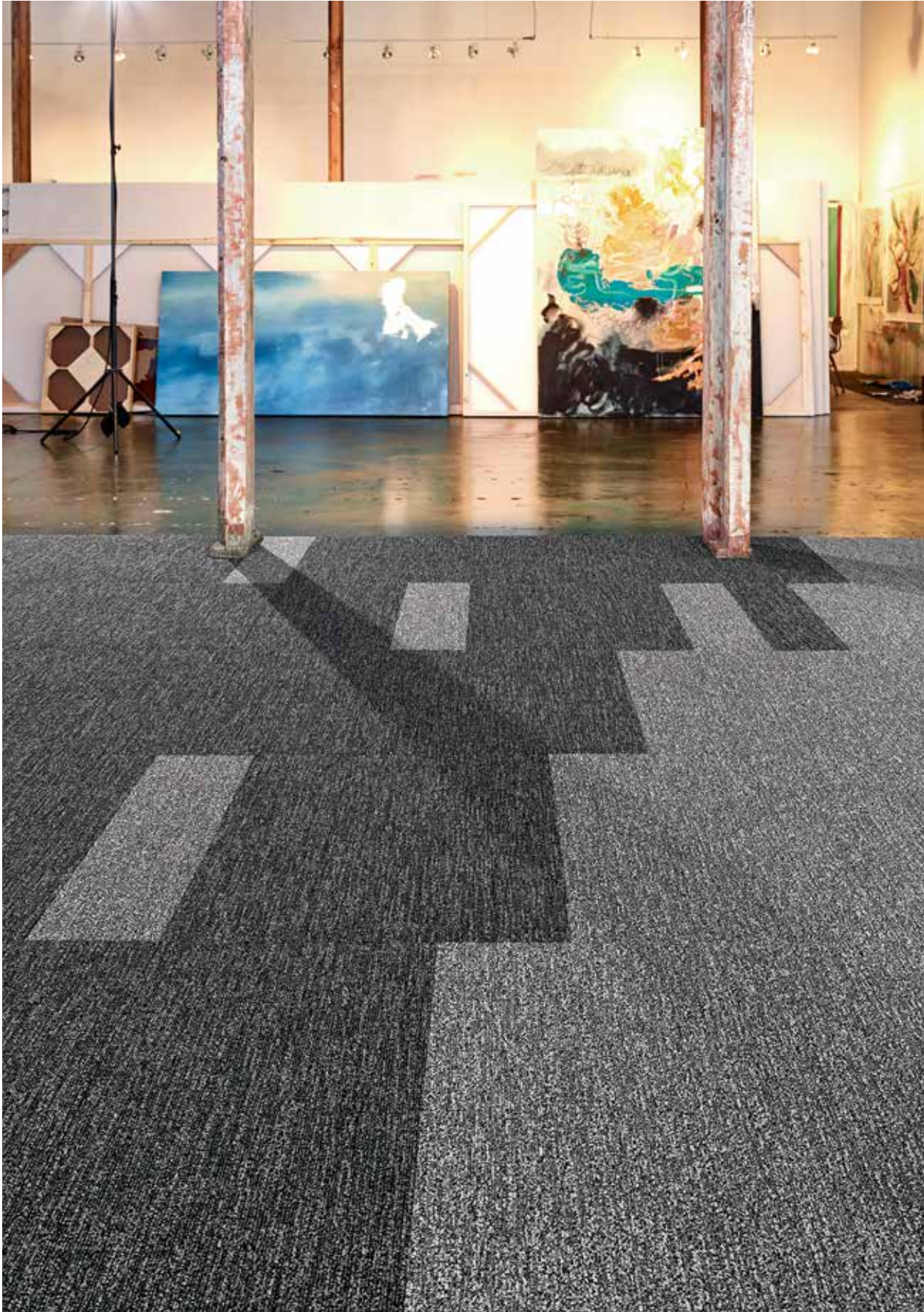
BURNISH 4BRT8, BODIE STATE PARK 402918, 18 IN X 36 IN - HERRINGBONE



BURNISH 4BRT8, ANGELES CREST 402915, 24 IN X 24 IN - BRICK



BURNISH 4BRT8, ANGELES CREST 402915, BODIE STATE PARK 402918,
AND MODJESKA CANYON 402920, 9 IN X 36 IN - HERRINGBONE



BURNISH 4BRT8, MODJESKA CANYON 402920, 9 IN X 36 IN, 18 IN X 36 IN - BRICK
ANGELES CREST 402915, 9 IN X 36 IN, 18 IN X 36 IN - BRICK

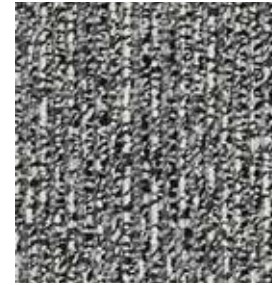


BURNISH 4BRT8, ANGELES CREST 402915, 24 IN X 24 IN - QUARTER TURN



BURNISH 4BRT8, ANGELES CREST 402915, 12 FT - BROADLOOM

BURNISH™



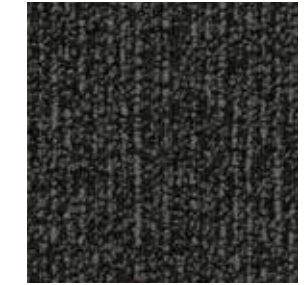
Angeles Crest 402915



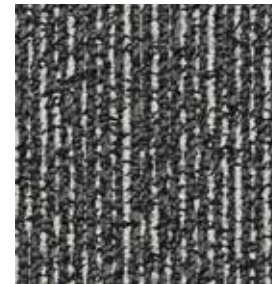
Point Dume 402916



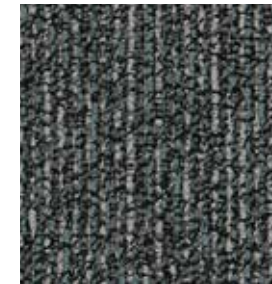
Saratoga Hills 402917



Bodie State Park 402918



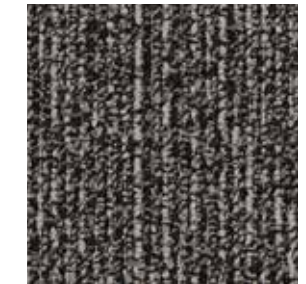
Modjeska Canyon 402920



Borrego Springs 402921



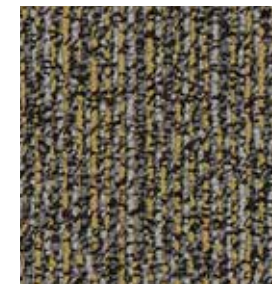
Escondido Falls 402922



Leo Carillo 402924



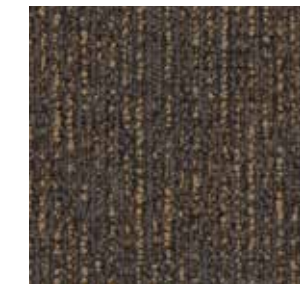
Joshua Tree 402925



San Onofre 402927



Circle S Ranch 402929



Palomar Mountain 402930

Style Number 4BRT8
Product Construction Tufted Textured Loop
Fiber Bentley Premium™ Type 6,6 Nylon
Dye Method Solution Dyed

For complete product specifications, visit bentleymills.com

PVC-Free Backing Options
 AFIRMA II™ Hardback Tile
 AFFIX™ Hardback Tile
 LuxFelt™ Cushion Tile
 NexStep® Cushion Tile
 EliteFlex™ 6 ft Cushion
 High PerformancePC Broadloom

Size Options
 9 in x 36 in, 18 in x 36 in, 24 in x 24 in
 9 in x 36 in, 18 in x 36 in, 24 in x 24 in
 9 in x 36 in, 18 in x 36 in, 24 in x 24 in
 9 in x 36 in, 18 in x 36 in, 24 in x 24 in
 6 ft
 12 ft

Bentley's carpet products are manufactured in our California mill, a LEED Existing Buildings: Operations and Maintenance Gold certified facility. Product Certifications and Declarations can be found under the Sustainability section of our website. For more information, including additional backing options, detailed specifications, and warranties, please visit bentleymills.com.

Carpet specifications and components are subject to normal manufacturing tolerances and may change without notice. Product warranted in accordance with the terms and conditions of Bentley's standard printed warranty in effect at time product is sold. All other warranties, including without limitation any implied warranties of merchantability or fitness for a particular purpose, are hereby disclaimed. Made in USA. Warning: unauthorized reproduction of this carpet design constitutes copyright infringement. ©2024 Bentley Mills, Inc.

The printed images may not be an accurate reproduction of the product's actual colorways. We strive to offer an authentic representation, but images may vary according to press run and location lighting. These images are intended as a guide only. If you would like a sample of this product, please call Customer Care at 800.423.4709.

Need additional samples or information? 800.423.4709 | bentleymills.com
 (BK-CP-1124)

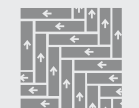
BENTLEY®

Recommended Carpet Tile Installation Methods

9 in x 36 in



Ashlar



Herringbone

18 in x 36 in



Brick



Herringbone



Monolithic

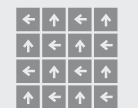
24 in x 24 in



Brick



Monolithic



Quarter Turn



CE Mark excludes AFFIX™ Hardback Tile.

BENTLEY®

800.423.4709 | BENTLEYMILLS.COM

14641 EAST DON JULIAN ROAD, CITY OF INDUSTRY, CALIFORNIA 91746