



BENTLEY[®]

SHAPESHIFTER

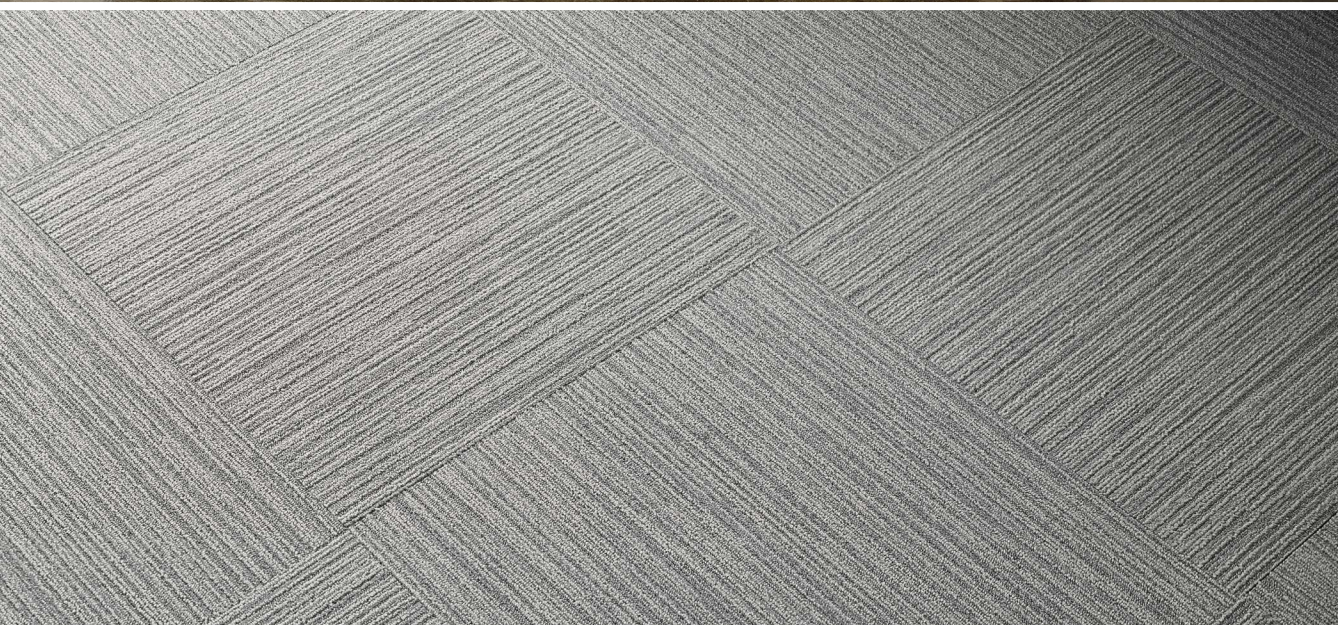
FAST TRACK *QUICK SHIP*





SHAPESHIFTER™
4SET40AA0T
Beamsplitter 400033
18 in x 36 in
HERRINGBONE





LEFT
SHAPESHIFTER
4SET40220T
Photon 400027
24 in x 24 in
MONOLITHIC

RIGHT
SHAPESHIFTER
4SET40220T
Energy Transfer 400030
24 in x 24 in
QUARTER TURN



SHAPESHIFTER

4SET40620R

Spin Action 400022

12 ft

BROADLOOM









SHAPESHIFTER

4SET40AA0T

Energy Transfer 400030

Sci-fi 400031

18 in x 36 in

PARQUET



LEFT

SHAPESHIFTER

4SET40220T

Photon 400027

Spin Action 400022

24 in x 24 in

BRICK

RIGHT

SHAPESHIFTER

4SET40AA0T

Beamsplitter 400033

18 in x 36 in

BRICK









SHAPESHIFTER

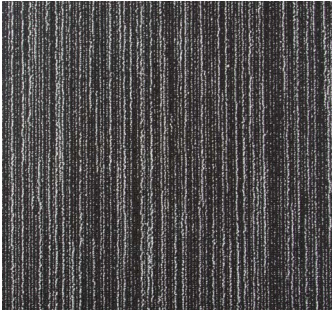
4SET40AA0T

Quantum Theory 400032

18 in x 36 in

BRICK

SHAPESHIFTER color line as featured in architect folder.



Time Traveler 400020



Waveform 400021



Spin Action 400022



Qubits 400023



Transmitter 400024



Superposition 400025



Photon 400027



Subatomic 400028



Entanglement 400029



Energy Transfer 400030



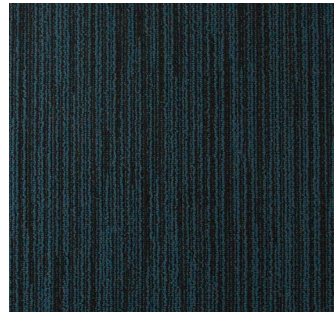
Sci-fi 400031



Quantum Theory 400032



Beamsplitter 400033



Particle 400034

The printed images may not be an accurate reproduction of the product's actual colorways. Please note that images were taken in a loft, full of natural light. We strive to offer an authentic representation, but images may vary according to press run and location lighting. These images are intended as a guide only. If you would like a sample of this product, please call Customer Care at 800.423.4709.

SHAPESHIFTER™

SPECIFICATIONS

Style Number	4SET4
Product Construction	Tufted Textured Loop
Fiber	Antron® Lumena™ Type 6,6 Nylon
Dye Method	Solution Dyed
Soil/Stain Protection	XTERA™
Secondary Backing	
Broadloom	High PerformancePC
Carpet Tile	NexStep® Cushion Tile / AFIRMA™ Hardback Tile
Machine Gauge	1/12 in (47.2 ends/10 cm)
Stitches	10.7/in (42.1 ends/10 cm)
Pile Density	5,112 oz/yd³
Total Weight	
High PerformancePC Broadloom	50 oz/yd² (1,695.3 g/m²)
NexStep® Cushion Tile	88 oz/yd² (2,983.7 g/m²)
AFIRMA™ Hardback Tile	79 oz/yd² (2,678.6 g/m²)
Total Thickness	
High PerformancePC Broadloom	0.210 in (5.3 mm)
NexStep® Cushion Tile	0.310 in (7.9 mm)
AFIRMA™ Hardback Tile	0.190 in (4.8 mm)
Pattern Repeat	
Broadloom	Pattern Match Not Required
Carpet Tile	None
Radiant Panel	Passes Class 1, ≥ 0.45 W/cm² (ASTM-E648)
Smoke Density	< 450 dm Corrected (ASTM-E662), Flaming
Static	≤ 3.5 kV (AATCC-134), Step
Flammability	Passes Methenamine Pill Test (CPSC-FF1-70)

Fast Track is Bentley's quick-ship program. This program is designed for maximum flexibility and expedited delivery to the client. Shapeshifter is available in 14 colorways in 18 in x 36 in and 24 in x 24 in NexStep® Cushion Tile, AFIRMA™ Hardback Tile and High PerformancePC Broadloom. Orders of 1500 square yards or less will be ready to ship within 10 business days of order. For orders exceeding 1500 square yards, please contact our Customer Care Concierge for availability.



STYLE NUMBERS

SHAPESHIFTER	BACKING	SIZE
4SET40620R	High PerformancePC Broadloom	12 ft (3.657 m) — also available in area rugs
4SET40AA0T	NexStep® Cushion Tile	18 in x 36 in (45.72 cm x 91.44 cm)
4SET40220T	NexStep® Cushion Tile	24 in x 24 in (60.96 cm x 60.96 cm)
4SET40AA0K	AFIRMA™ Hardback Tile	18 in x 36 in (45.72 cm x 91.44 cm)
4SET40220K	AFIRMA™ Hardback Tile	24 in x 24 in (60.96 cm x 60.96 cm)

RECOMMENDED BROADLOOM INSTALLATION METHOD

Shapeshifter in broadloom requires the cross seams to be cut utilizing a serpentine type method. The cross seams (end seams) require a serpentine double-cut seam in an effort to reduce possible visual discrepancies with the face yarn.

PLEASE NOTE: Shapeshifter in broadloom will still require and adhere to the Bentley-approved Broadloom Installation Basics guide with the above exception.

Serpentine Cut Cross Seams Installation Instructions:

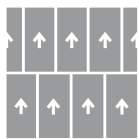
1. Recommended Seam Cutting Tool: National Carpet Equipment #575 Commercial Seam Cutter or equivalent.
2. Overlap end seams 2 inches to allow sufficient materials to be cut.
3. With firm and continuous pressure, cut both breadths of material in a slight wave pattern resulting in an 18-24 inch wave repeat. The blade should be sharp and lightly touch the subfloor.
4. Remove both top and bottom strips of carpet and properly edge seal and seam seal with appropriate seam sealer.



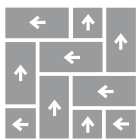
SERPENTINE DIAGRAM

RECOMMENDED CARPET TILE INSTALLATION METHODS

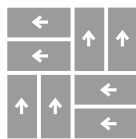
18 in x 36 in



Brick

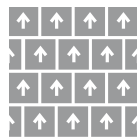


Herringbone

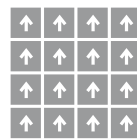


Parquet

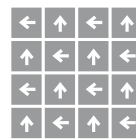
24 in x 24 in



Brick



Monolithic



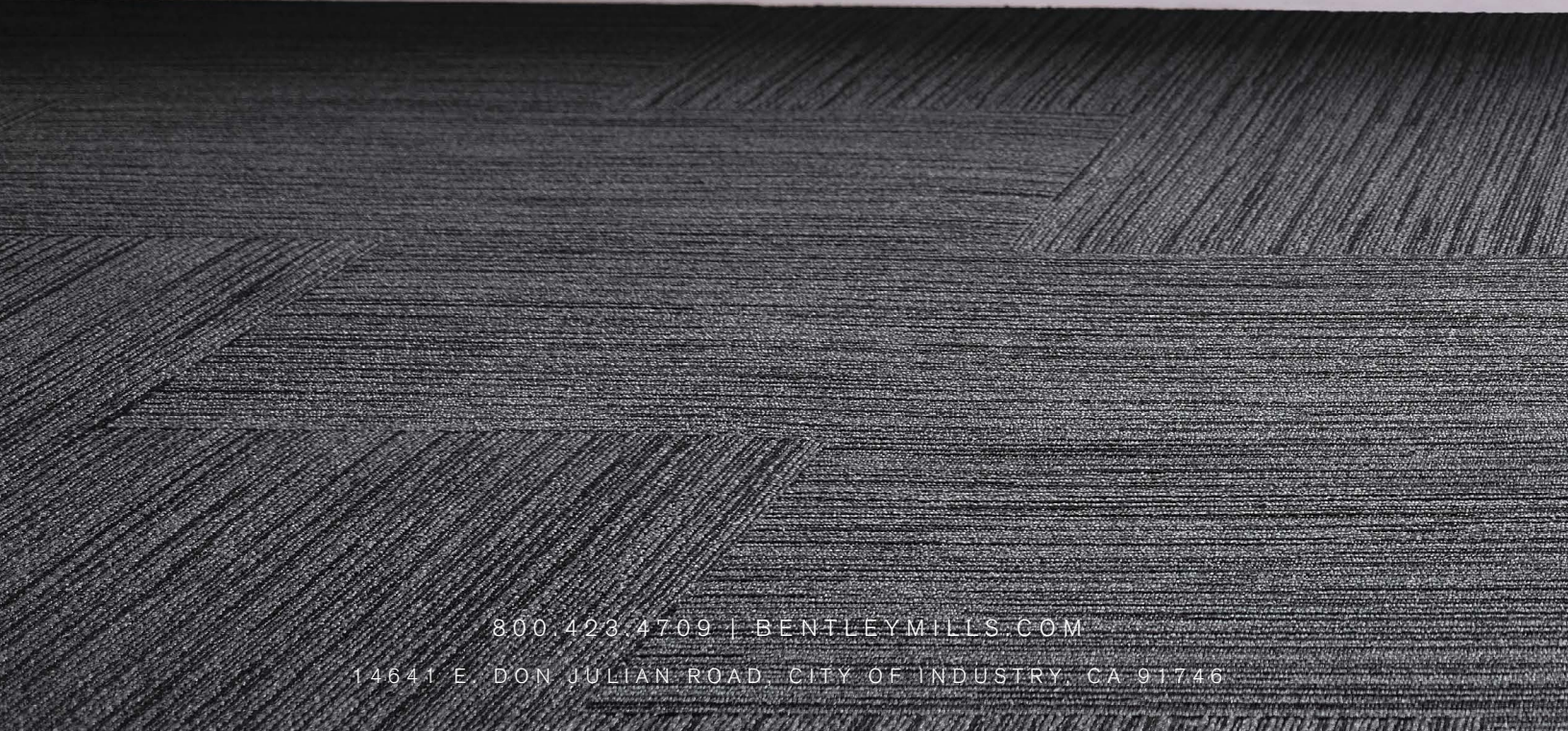
Quarter Turn

Bentley's High PerformancePC, NexStep® Cushion Tile, and AFIRMA™ Hardback Tile products are Cradle to Cradle Certified™ Silver. Bentley products are also certified under the NSF/ ANSI Standard 140 – Sustainable Carpet Assessment (NSF 140). Six of Bentley's standard backing products are NSF 140 certified at the Gold level or above. Bentley's carpet products are manufactured in our California mill, a LEED for Existing Buildings: Operations and Maintenance (LEED®-EBOM) Gold certified facility. Please inquire about product warranties for specific backing options.

Patterned carpet may require special attention by the installer to assure a suitable match, and must be addressed in the original labor quotation. Products that go through the shearing process may result in a small loss of yarn weight. Slight variations in color among different production lots are normal and should be considered in the overall installation plan. Carpet specifications and components are subject to normal manufacturing tolerances and may change without notice. Technical performance characteristics are subject to adjustment based on results of post-manufacture testing. Product warranted in accordance with the terms and conditions of Bentley's standard printed warranty in effect at time product is sold. All other warranties, including without limitation any implied warranties of merchantability or fitness for a particular purpose, are hereby disclaimed. Made in USA. Warning: unauthorized reproduction of this carpet design constitutes copyright infringement. ©2016 Bentley Mills, Inc.

Need additional samples or information? 800.423.4709 | BENTLEYMILLS.COM
(BK-CP-SET-0116)





800.423.4709 | BENTLEYMILLS.COM

14641 E. DON JULIAN ROAD, CITY OF INDUSTRY, CA 91746