



BENTLEY

ALTITUDE | VERTEX



ALTITUDE™
8AA388630R
FERVOR 803109
12 ft 6 in
BROADLOOM



VERTEX™
4VX220620R
BATHOS 803107
12 ft
BROADLOOM



LEFT

ALTITUDE

8AA388630R

FERVOR 803109

12 ft 6 in

BROADLOOM

RIGHT

ALTITUDE

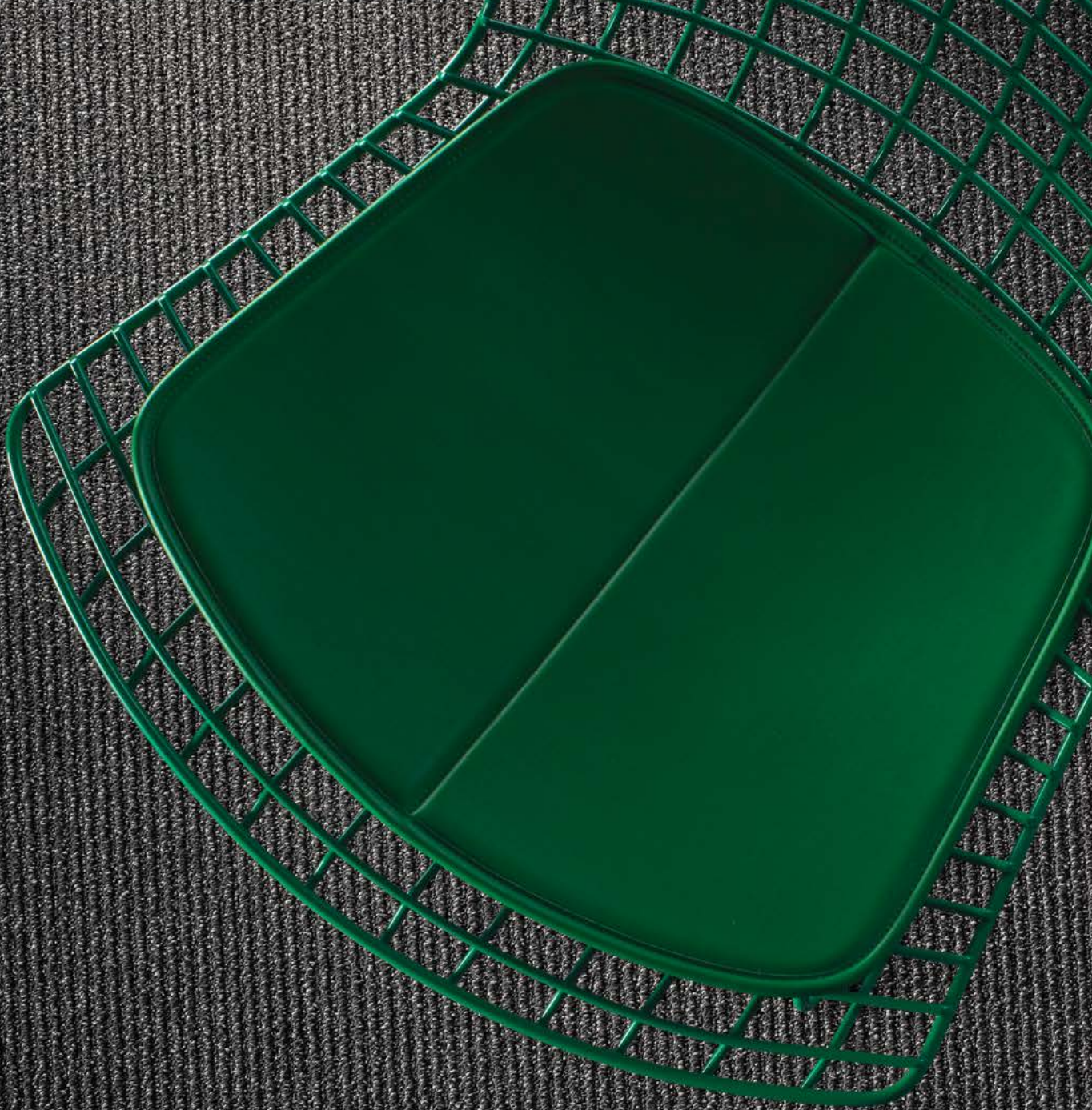
8AA388630R

CLOUD NINE 803108

12 ft 6 in

BROADLOOM







LEFT

ALTITUDE

8AA388638R

BATHOS 803107

12 ft 6 in

BROADLOOM

RIGHT

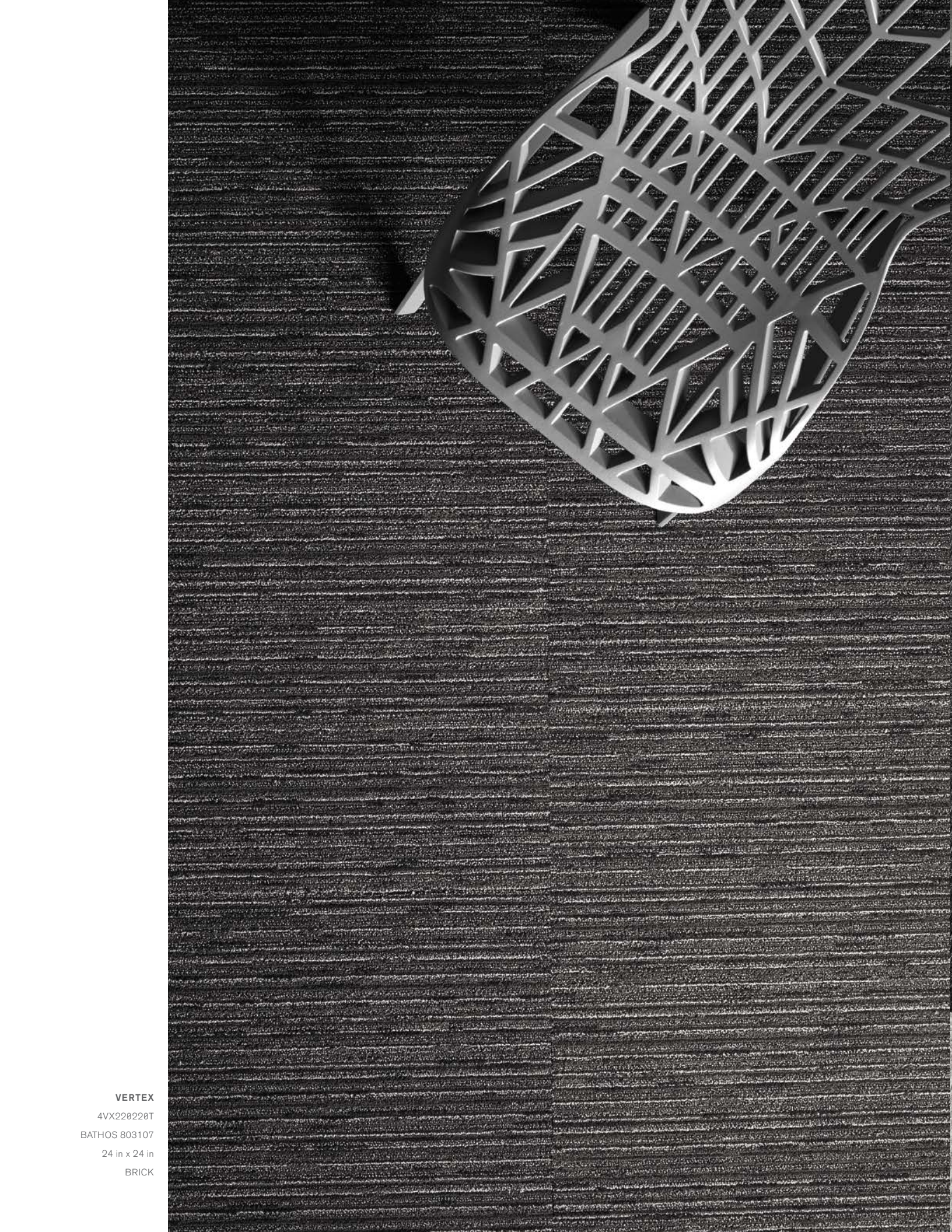
VERTEX

4VX228628R

BATHOS 803107

12 ft

BROADLOOM



VERTEX

4VX220220T

BATHOS 803107

24 in x 24 in

BRICK



VERTEX

4VX220220T

BATHOS 803107

FERVOR 803109

24 in x 24 in

QUARTER TURN



VERTEX

4VX220220T

BATHOS 803107

EFFERVESCENT 803106

PENSIVE 803105

FERVOR 803109

24 in x 24 in

BRICK





TOP

VERTEX

4VX220620R

BATHOS 803107

12 ft

BROADLOOM

BOTTOM

VERTEX

4VX220220T

EFFERVESCENT 803106

24 in x 24 in

MONOLITHIC



VERTEX
4VX228AA8T
ESPRIT 803100
18 in x 36 in
HERRINGBONE

CURIO COLLECTION color line as featured in architect folder.

Altitude

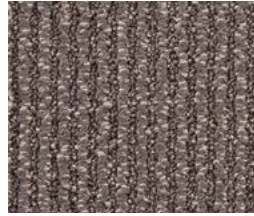
Available in Broadloom Only



Esprit 803100



Upbeat 803101



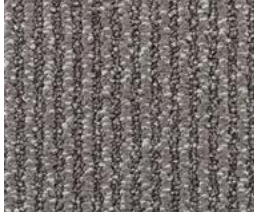
Somber 803102



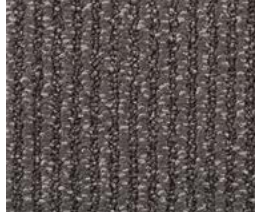
Elation 803103



Melodrama 803104



Pensive 803105



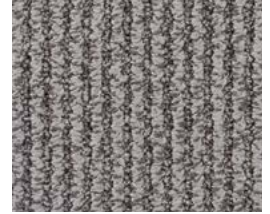
Effervescent 803106



Bathos 803107



Cloud Nine 803108



Fervor 803109



Melancholy 803110



Passion 803111



Tribulation 803112

Vertex

Available in Broadloom and Tile



Esprit 803100



Upbeat 803101



Somber 803102



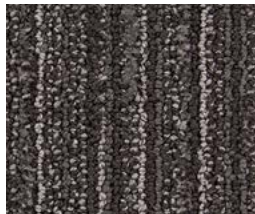
Elation 803103



Melodrama 803104



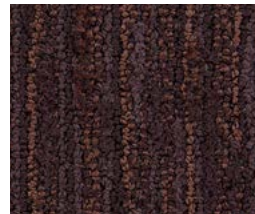
Pensive 803105



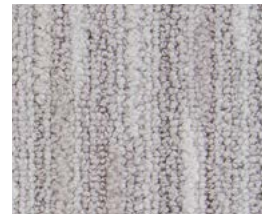
Effervescent 803106



Bathos 803107



Cloud Nine 803108



Fervor 803109



Melancholy 803110



Passion 803111



Tribulation 803112

The printed images may not be an accurate reproduction of the product's actual colorways. We strive to offer an authentic representation, but images may vary according to press run. These images are intended as a guide only. If you would like a sample of this product, please call Customer Care at 800.423.4709.

CURIO COLLECTION

SPECIFICATIONS

Style Number	ALTITUDE™ 8AA38	VERTEX™ 4VX22
Product Construction	Tufted Textured Loop	Tufted Tip-Sheared
Fiber	Antron® Legacy™ Type 6,6 Nylon	Antron® Legacy™ Type 6,6 Nylon
Dye Method	COLORCAST™	COLORCAST™
Soil/Stain Protection	XTERA™	XTERA™
Secondary Backing		
Broadloom	High PerformancePC	High PerformancePC
Carpet Tile	Not Applicable	NexStep® Cushion Tile / AFIRMA™ Hardback Tile
Yarn Weight	38 oz/yd ² (1,288.4 g/m ²)	22 oz/yd ² (745.9 g/m ²)
Machine Gauge	1/10 in (39.4 ends/10 cm)	1/12 in (47.2 ends/10 cm)
Pile Height		
High	0.214 in (5.4 mm)	0.190 in (4.8 mm)
Medium	Not Applicable	0.130 in (3.3 mm)
Low	0.110 in (2.8 mm)	0.070 in (1.8 mm)
Stitches	9.5/in (37.4 ends/10 cm)	11.5/in (45.3 ends/10 cm)
Pile Density	7,220 oz/yd ³	6,180 oz/yd ³
Total Weight		
High PerformancePC Broadloom	73 oz/yd ² (2,475.1 g/m ²)	57 oz/yd ² (1,932.6 g/m ²)
NexStep® Cushion Tile	Not Applicable	99 oz/yd ² (3,387.2 g/m ²)
AFIRMA™ Hardback Tile	Not Applicable	80 oz/yd ² (2,743.0 g/m ²)
Total Thickness		
High PerformancePC Broadloom	0.310 in (7.9 mm)	0.270 in (6.9 mm)
NexStep® Cushion Tile	Not Applicable	0.370 in (9.4 mm)
AFIRMA™ Hardback Tile	Not Applicable	0.250 in (6.4 mm)
Pattern Repeat		
Broadloom	13/32 in (1.03 cm) (W) Stripe	24 in (60.96 cm) (W) x 33-17/32 in (85.16 cm) (L)
Carpet Tile	Not Applicable	None
Radiant Panel	Passes Class 1, ≥ 0.45 W/cm ² (ASTM-E648)	Passes Class 1, ≥ 0.45 W/cm ² (ASTM-E648)
Smoke Density	< 450 dm Corrected (ASTM-E662), Flaming	< 450 dm Corrected (ASTM-E662), Flaming
Static	≤ 3.5 kV (AATCC-134), Step	≤ 3.5 kV (AATCC-134), Step
Flammability	Passes Methenamine Pill Test (CPSC-FF1-70)	Passes Methenamine Pill Test (CPSC-FF1-70)

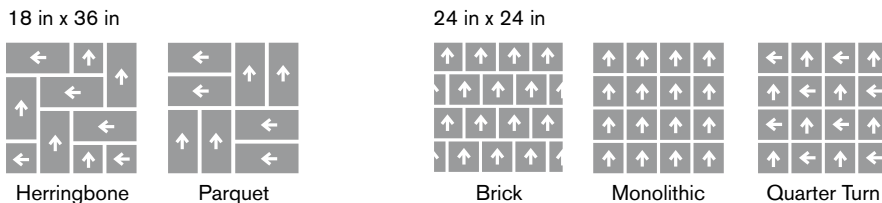
When selecting colors beyond those swatched in the architect folder, COLORCAST™ utilizes a standard order size of 50 square yards in tile or broadloom (based on availability) and up to 5% overage, with no upcharges. For more information, please contact your local account executive.

All photographed furniture provided by Knoll.

STYLE NUMBERS	BACKING	SIZE
ALTITUDE		
8AA380630R	High PerformancePC Broadloom	12 ft 6 in (3.810 m) - Also available in Area Rugs
VERTEX		
4VX220620R	High PerformancePC Broadloom	12 ft (3.657 m) - Also available in Area Rugs
4VX220AA0T	NexStep® Cushion Tile	18 in x 36 in (45.72 cm x 91.44 cm)
4VX220220T	NexStep® Cushion Tile	24 in x 24 in (60.96 cm x 60.96 cm)
4VX220AA0K	AFIRMA™ Hardback Tile	18 in x 36 in (45.72 cm x 91.44 cm)
4VX220220K	AFIRMA™ Hardback Tile	24 in x 24 in (60.96 cm x 60.96 cm)



RECOMMENDED CARPET TILE INSTALLATION METHODS – VERTEX ONLY



Bentley's High PerformancePC, NexStep® Cushion Tile, and AFIRMA™ Hardback Tile products are Cradle to Cradle Certified™ Silver. Bentley products are also certified under the NSF/ANSI Standard 140 – Sustainable Carpet Assessment (NSF 140). Six of Bentley's standard backing products are NSF 140 certified at the Gold level or above. Bentley's carpet products are manufactured in our California mill, a LEED for Existing Buildings: Operations and Maintenance (LEED®-EBOM) Gold certified facility. Please inquire about product warranties for specific backing options.

Patterned carpet may require special attention by the installer to assure a suitable match, and must be addressed in the original labor quotation. Products that go through the shearing process may result in a small loss of yarn weight. Slight variations in color among different production lots are normal and should be considered in the overall installation plan. Carpet specifications and components are subject to normal manufacturing tolerances and may change without notice. Technical performance characteristics are subject to adjustment based on results of post-manufacture testing. Product warranted in accordance with the terms and conditions of Bentley's standard printed warranty in effect at time product is sold. All other warranties, including without limitation any implied warranties of merchantability or fitness for a particular purpose, are hereby disclaimed. Made in USA. Warning: unauthorized reproduction of this carpet design constitutes copyright infringement. ©2017 Bentley Mills, Inc.

Need additional samples or information? 800.423.4709 | BENTLEYMILLS.COM
(BK-CP-CC-0717)





800.423.4709 | BENTLEYMILLS.COM

14641 E. DON JULIAN ROAD, CITY OF INDUSTRY, CA 91746