



**BENTLEY®**

COIN-OP | ENDGAME

**FAST TRACK** *QUICK SHIP*





LEFT  
**COIN-OP™**  
4CIT60220T  
Noobie 401376  
24 in x 24 in  
BRICK

RIGHT  
**ENDGAME™**  
4ENT60AA0T  
Level Up 401370  
18 in x 36 in  
HERRINGBONE





LEFT  
**COIN-OP**  
4CIT60AA0T  
Fan Boy 401377  
18 in x 36 in  
HERRINGBONE

RIGHT  
**COIN-OP**  
4CIT60AA0T  
Level Up 401370  
18 in x 36 in  
MONOLITHIC



LEFT

**COIN-OP**

4CIT60220T

Noobie 401376

24 in x 24 in

QUARTER TURN

RIGHT

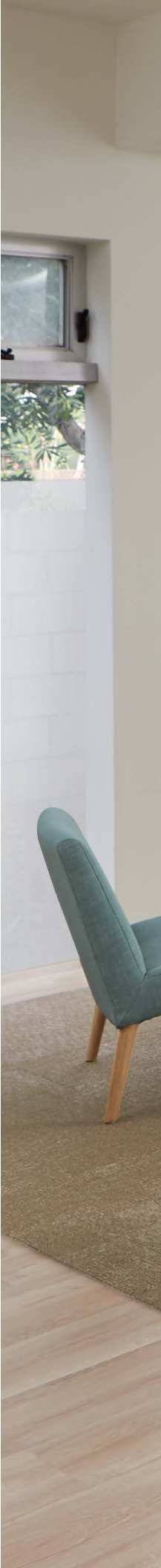
**ENDGAME**

4ENT60220T

Metal Mania 401372

24 in x 24 in

QUARTER TURN







LEFT  
**ENDGAME**

4ENT60220T  
Level Up 401370  
24 in x 24 in  
BRICK

MIDDLE  
**ENDGAME**

4ENT60AA0T  
Noobie 401376  
18 in x 36 in  
BRICK

RIGHT  
**ENDGAME**

4ENT60220T  
Level Up 401370  
24 in x 24 in  
MONOLITHIC









LEFT  
**ENDGAME**  
4ENT60AA0T  
Noobie 401376  
18 in x 36 in  
MONOLITHIC

RIGHT  
**COIN-OP**  
4CIT60620R  
Super Evolution 401380  
12 ft  
BROADLOOM



**COIN-OP**

4CIT60220T

Noobie 401376

24 in x 24 in

MONOLITHIC

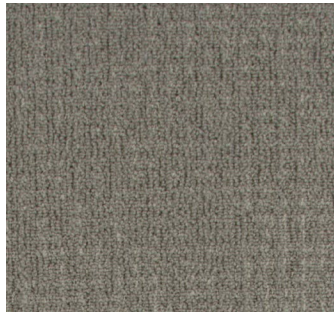


**COIN-OP**  
4CIT60AA0T  
Fan Boy 401377  
18 in x 36 in  
BRICK

COIN-OP and ENDGAME color line as featured in architect folder.



Level Up 401370



Gamer 401371



Metal Mania 401372



Console 401373



Robo Devils 401374



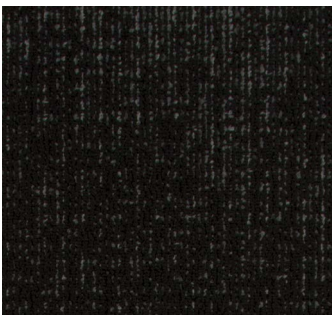
Alien Fighter 401375



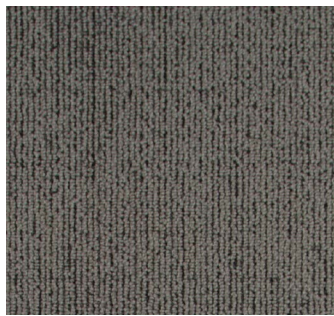
Noobie 401376



Fan Boy 401377



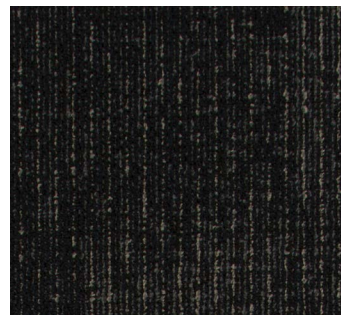
Ghost Ninja 401378



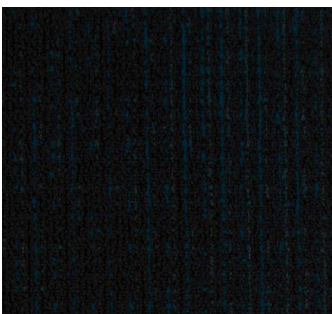
Avatar 401379



Super Evolution 401380



Dragon Match 401381



Cheat Code 401382

The printed images may not be an accurate reproduction of the products' actual colorways. Please note that images were taken in a loft, full of natural light. We strive to offer an authentic representation, but images may vary according to press run and location lighting. These images are intended as a guide only. If you would like a sample of this product, please call Customer Care at **800.423.4709**.

**SPECIFICATIONS**

Style Number  
Product Construction  
Fiber  
Dye Method  
Soil/Stain Protection  
Secondary Backing

**COIN-OP™**

4CIT6  
Tufted Textured Loop  
Antron® Lumena™ Type 6,6 Nylon  
Solution Dyed  
XTERA™

**ENDGAME™**

4ENT6  
Tufted Textured Loop  
Antron® Lumena™ Type 6,6 Nylon  
Solution Dyed  
XTERA™

Broadloom  
Carpet Tile  
Machine Gauge  
Stitches  
Pile Density  
Total Weight  
High PerformancePC Broadloom  
NexStep® Cushion Tile  
AFIRMA™ Hardback Tile

High PerformancePC  
NexStep® Cushion Tile /AFIRMA™ Hardback Tile  
1/12 in (47.2 ends/10 cm)  
10.3/in (40.5 ends/10 cm)  
6,165 oz/yd³  
50 oz/yd² (1,695.3 g/m²)  
92 oz/yd² (3,119.3 g/m²)  
73 oz/yd² (2,475.1 g/m²)

Not Applicable  
NexStep® Cushion Tile /AFIRMA™ Hardback Tile  
1/12 in (47.2 ends/10 cm)  
10.3/in (40.5 ends/10 cm)  
5,542 oz/yd³  
Not Applicable  
92 oz/yd² (3,119.3 g/m²)  
73 oz/yd² (2,475.1 g/m²)

**Total Thickness**

High PerformancePC Broadloom  
NexStep® Cushion Tile  
AFIRMA™ Hardback Tile

0.200 in (5.1 mm)  
0.300 in (7.6 mm)  
0.180 in (4.6 mm)

Not Applicable  
0.300 in (7.6 mm)  
0.180 in (4.6 mm)

**Pattern Repeat**

Broadloom  
Carpet Tile

Pattern Match Not Required  
None

Not Applicable  
None

**Radiant Panel**

**Smoke Density**

**Static**

**Flammability**

Passes Class 1, ≥ 0.45 W/cm² (ASTM-E648)  
< 450 dm Corrected (ASTM-E662), Flaming  
≤ 3.5 kV (AATCC-134), Step  
Passes Methenamine Pill Test (CPSC-FF1-70)

Passes Class 1, ≥ 0.45 W/cm² (ASTM-E648)  
< 450 dm Corrected (ASTM-E662), Flaming  
≤ 3.5 kV (AATCC-134), Step  
Passes Methenamine Pill Test (CPSC-FF1-70)

**Fast Track** is Bentley's quick-ship program. This program is designed for maximum flexibility and expedited delivery to the client. Coin-op and Endgame are available in 13 colorways in 18 in x 36 in and 24 in x 24 in NexStep® Cushion Tile and AFIRMA™ Hardback Tile. Coin-op is available in High PerformancePC Broadloom. Orders of 1,500 square yards or less will be ready to ship within 10 business days of order. For orders exceeding 1,500 square yards, please contact our Customer Care Concierge for availability.

**STYLE NUMBERS**

**COIN-OP**

4CIT60620R  
4CIT60AA0T  
4CIT60220T  
4CIT60AA0K  
4CIT60220K

**ENDGAME**

Not Applicable  
4ENT60AA0T  
4ENT60220T  
4ENT60AA0K  
4ENT60220K

**BACKING**

High PerformancePC Broadloom  
NexStep® Cushion Tile  
NexStep® Cushion Tile  
AFIRMA™ Hardback Tile  
AFIRMA™ Hardback Tile

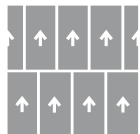
**SIZE**

12 ft (3.657 m) Also available in Area Rugs  
18 in x 36 in (45.72 cm x 91.44 cm)  
24 in x 24 in (60.96 cm x 60.96 cm)  
18 in x 36 in (45.72 cm x 91.44 cm)  
24 in x 24 in (60.96 cm x 60.96 cm)

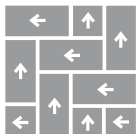


**RECOMMENDED CARPET TILE INSTALLATION METHODS**

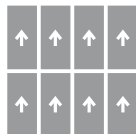
**18 in x 36 in**



Brick

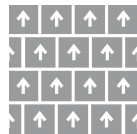


Herringbone

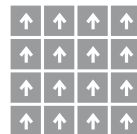


Monolithic

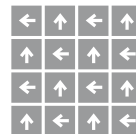
**24 in x 24 in**



Brick



Monolithic



Quarter Turn

Bentley's High PerformancePC, NexStep® Cushion Tile, and AFIRMA™ Hardback Tile products are Cradle to Cradle Certified™ Silver. Bentley products are also certified under the NSF/ ANSI Standard 140 – Sustainable Carpet Assessment (NSF 140). Six of Bentley's standard backing products are NSF 140 certified at the Gold level or above. Bentley's carpet products are manufactured in our California mill, a LEED for Existing Buildings: Operations and Maintenance (LEED®-EBOM) Gold certified facility. Please inquire about product warranties for specific backing options.

Patterned carpet may require special attention by the installer to assure a suitable match, and must be addressed in the original labor quotation. Products that go through the shearing process may result in a small loss of yarn weight. Slight variations in color among different production lots are normal and should be considered in the overall installation plan. Carpet specifications and components are subject to normal manufacturing tolerances and may change without notice. Technical performance characteristics are subject to adjustment based on results of post-manufacture testing. Product warranted in accordance with the terms and conditions of Bentley's standard printed warranty in effect at time product is sold. All other warranties, including without limitation any implied warranties of merchantability or fitness for a particular purpose, are hereby disclaimed. Made in USA. Warning: unauthorized reproduction of this carpet design constitutes copyright infringement. ©2017 Bentley Mills, Inc.

Need additional samples or information? 800.423.4709 | BENTLEYMILLS.COM  
(BK-CP-SET-0517)





800.423.4709 | BENTLEYMILLS.COM

14641 E. DON JULIAN ROAD, CITY OF INDUSTRY, CA 91746