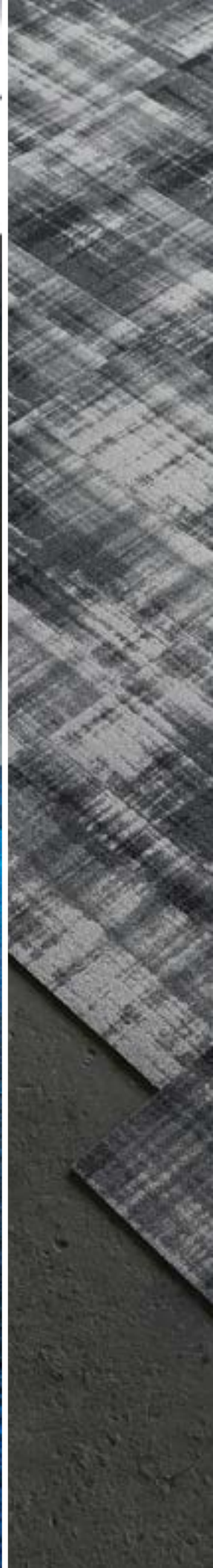


(los)t angeles



BENTLEY[®]

TRESPASS | UNDERGROUND





LEFT
UNDERGROUND™
8UU200AA0T
Sunken City 806300
18 in x 36 in
HERRINGBONE

RIGHT
TRESPASS™
8TE200AA0T
Bronson Cave 806301
18 in x 36 in
BRICK



LEFT
TRESPASS
8TE200220T
Piggyback Yard 806306
24 in x 24 in
BRICK

RIGHT
TRESPASS
8TE200AA0T
Bronson Cave 806301
18 in x 36 in
HERRINGBONE





TRESPASS

8TE200220T

Piggyback Yard 806306

24 in x 24 in

MONOLITHIC



UNDERGROUND
8UU200220T
Bronson Cave 806301
24 in x 24 in
BRICK





UNDERGROUND
8UU200AA0T
Bronson Cave 806301
18 in x 36 in
PARQUET



LEFT
UNDERGROUND
8UU200220T
Piggyback Yard 806306
24 in x 24 in
QUARTER TURN

RIGHT TOP
TRESPASS
8TE200220T
Piggyback Yard 806306
24 in x 24 in
QUARTER TURN

RIGHT BOTTOM
UNDERGROUND
8UU200220T
Bronson Cave 806301
24 in x 24 in
MONOLITHIC





LEFT

UNDERGROUND

8UU200AA0T

Piggyback Yard 806306

18 in x 36 in

BRICK

RIGHT

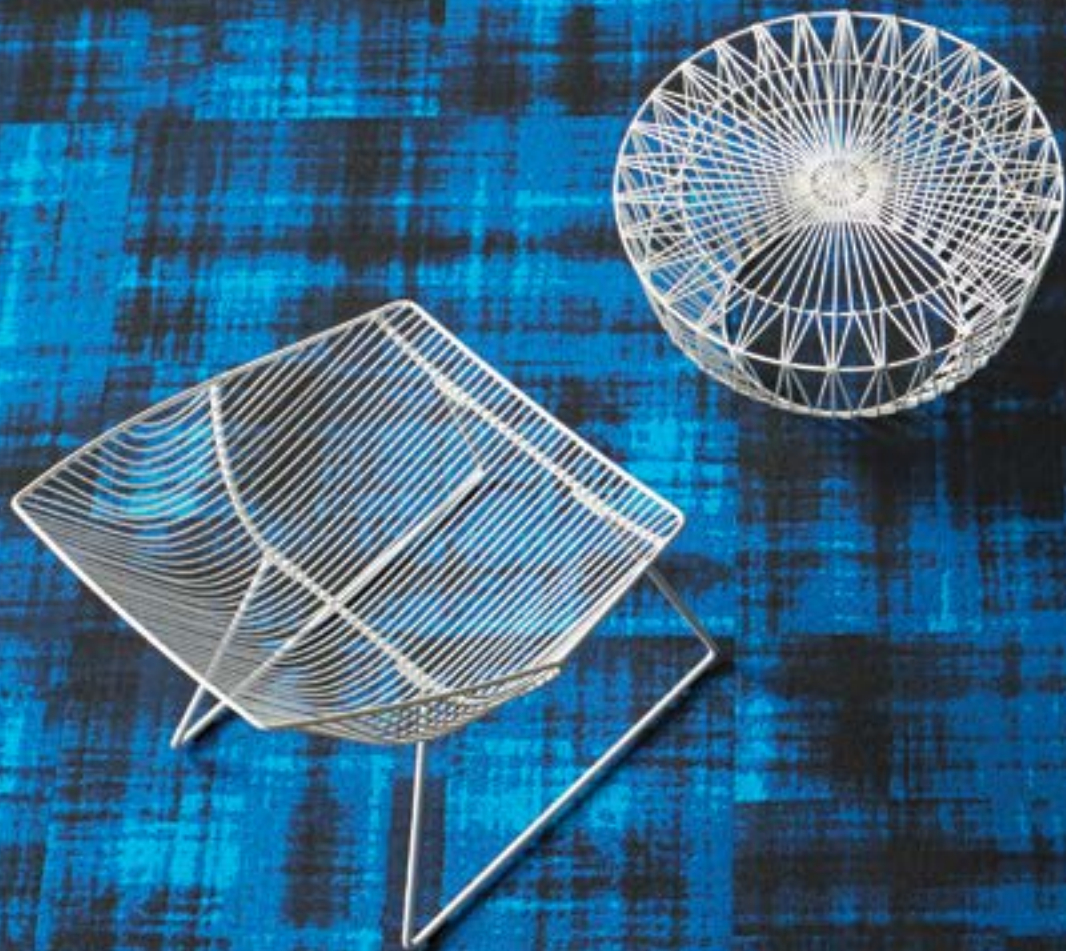
TRESPASS

8TE200AA0T

Sunken City 806300

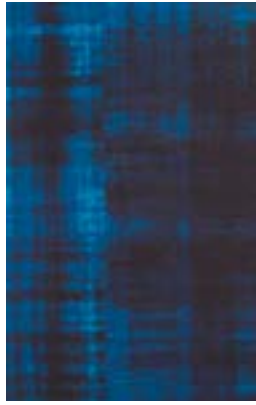
18 in x 36 in

PARQUET



LOST ANGELES COLLECTION color line

Trespass



Sunken City 806300



Bronson Cave 806301



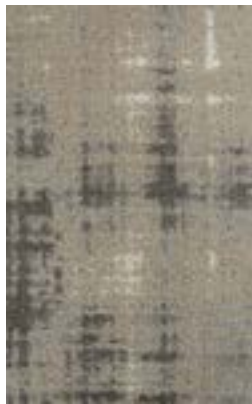
Old Zoo 806302



Berendo Stairs 806303



Murphy Ranch 806304



Salton Sea 806305



Piggyback Yard 806306

Underground



Sunken City 806300



Bronson Cave 806301



Old Zoo 806302



Berendo Stairs 806303



Murphy Ranch 806304



Salton Sea 806305



Piggyback Yard 806306

The printed images may not be an accurate reproduction of the products' actual colorways. We strive to offer an authentic representation, but images may vary according to press run and location lighting. These images are intended as a guide only. If you would like a sample of this product, please call Customer Care at 800.423.4709.

LOST ANGELES COLLECTION

SPECIFICATIONS

Style Number
Product Construction
Fiber
Dye Method
Soil/Stain Protection
Secondary Backing

TRESPASS™

8TE20
Tufted Textured Loop
Antron® Lumena™ Type 6,6 Nylon
Solution Dyed
XTERA™
NexStep® Cushion Tile
AFIRMA™ Hardback Tile
1/10 in (39.4 ends/10 cm)
10.0/in (39.4 ends/10 cm)
7,235 oz/yd³
94 oz/yd² (3,187.1 g/m²)
85 oz/yd² (2,882.0 g/m²)
Total Thickness
NexStep® Cushion Tile 0.325 in (8.3 mm)
AFIRMA™ Hardback Tile 0.205 in (5.2 mm)
None
Passes Class 1, ≥ 0.45 W/cm² (ASTM-E648)
< 450 dm Corrected (ASTM-E662), Flaming
≤ 3.5 kV (AATCC-134), Step
Passes Methenamine Pill Test (CPSC-FF1-70)

UNDERGROUND™

8UU20
Tufted Textured Loop
Antron® Lumena™ Type 6,6 Nylon
Solution Dyed
XTERA™
NexStep® Cushion Tile
AFIRMA™ Hardback Tile
1/10 in (39.4 ends/10 cm)
10.0/in (39.4 ends/10 cm)
7,235 oz/yd³
94 oz/yd² (3,187.1 g/m²)
85 oz/yd² (2,882.0 g/m²)
Total Thickness
NexStep® Cushion Tile 0.325 in (8.3 mm)
AFIRMA™ Hardback Tile 0.205 in (5.2 mm)
None
Passes Class 1, ≥ 0.45 W/cm² (ASTM-E648)
< 450 dm Corrected (ASTM-E662), Flaming
≤ 3.5 kV (AATCC-134), Step
Passes Methenamine Pill Test (CPSC-FF1-70)

All photographed furniture provided by Bend Goods Studio of Los Angeles, California.

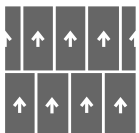


STYLE NUMBERS

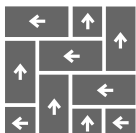
TRESPASS	UNDERGROUND	BACKING	SIZE
8TE200AA0T	8UU200AA0T	NexStep® Cushion Tile	18 in x 36 in (45.72 cm x 91.44 cm)
8TE200220T	8UU200220T	NexStep® Cushion Tile	24 in x 24 in (60.96 cm x 60.96 cm)
8TE200AA0K	8UU200AA0K	AFIRMA™ Hardback Tile	18 in x 36 in (45.72 cm x 91.44 cm)
8TE200220K	8UU200220K	AFIRMA™ Hardback Tile	24 in x 24 in (60.96 cm x 60.96 cm)

RECOMMENDED CARPET TILE INSTALLATION METHODS

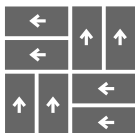
18 in x 36 in



Brick

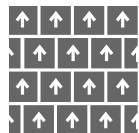


Herringbone

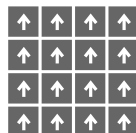


Parquet

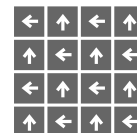
24 in x 24 in



Brick



Monolithic



Quarter Turn

Bentley's High PerformancePC, NexStep® Cushion Tile, and AFIRMA™ Hardback Tile products are Cradle to Cradle Certified™ Silver. Bentley products are also certified under the NSF/ ANSI Standard 140 – Sustainable Carpet Assessment (NSF 140). Six of Bentley's standard backing products are NSF 140 certified at the Gold level or above. Bentley's carpet products are manufactured in our California mill, a LEED for Existing Buildings: Operations and Maintenance (LEED®-EBOM) Gold certified facility. Please inquire about product warranties for specific backing options.

Patterned carpet may require special attention by the installer to assure a suitable match, and must be addressed in the original labor quotation. Products that go through the shearing process may result in a small loss of yarn weight. Slight variations in color among different production lots are normal and should be considered in the overall installation plan. Carpet specifications and components are subject to normal manufacturing tolerances and may change without notice. Technical performance characteristics are subject to adjustment based on results of post-manufacture testing. Product warranted in accordance with the terms and conditions of Bentley's standard printed warranty in effect at time product is sold. All other warranties, including without limitation any implied warranties of merchantability or fitness for a particular purpose, are hereby disclaimed. Made in USA. Warning: unauthorized reproduction of this carpet design constitutes copyright infringement. ©2016 Bentley Mills, Inc.



"LAST DAYS"

800.423.4709 | BENTLEYMILLS.COM

14641 E. DON JULIAN ROAD, CITY OF INDUSTRY, CA 91746